



CRUZIANA

GEOPARK NATURTEJO DA MESETA MERIDIONAL-EUROPEAN AND GLOBAL GEOPARK - MONTHLY REPORT

In this issue: National Geographic calendar 2013 with Geopark's historical villages – Portuguese Geoparks in the National Parliament – A new Geo-company and a new hotel in the Geopark – Geopark in FITUR Madrid...and more!



Olá/Hola/Ciao/Bonjour/Γειά σου/Hallo/God Dag/Salut/Zdravo/Hello/Ahoj/Helo/Helló/ Hei

Geo-stories from these Places and People: Lousa

The name is misleading: Lousa is a land of granites spreading for kilometers. The reason for the name, once more, is pure speculation. It could be related to the archeological antiquity of the area, which is testified by the Roman ruins of the Sacred Spring “Fonte Santa”. Moreover, the gentle waving of the landscape that can be perceived from the viewpoint of Portalão develops by olive tree grounds and pinewoods until the deeper Alpreade stream, in an area covering 35,72km². As geosites, Penedo da Boina is the only one known, interesting asymmetrically developed pedestal rock, unique in the Naturtejo Geopark for having plinth. Concerning built historical heritage, it is worth to mention the main square of unusual size for a village that was always as such and has living today 621 inhabitants. Here the interesting Mother church of the Lady of High Skies, the sixteen century St. Mary Fountain and some manors from the same period can be found. Walking in the oldest part of the village, between streets and alleys, we may find houses of balcony and some windows and shutters from XVI-XVIII centuries, chapels and the emblazoned property of the family Vaz Preto. In the vicinities, should be highlighted the Alpreade stream and in the water mills. From a historical point of view Lousa was chosen as operational headquarters of the Marquis of Alorna Pedro José de Almeida Portugal, located on the way from Abrantes to Almeida fortresses, to organize the Portuguese Army during the infamous “Oranges War” with Spain. During the Wolfram Rush there were two mines in Lousa, from which nothing exists. Ronções was declared in 1905 by the Viscount of Castelo Novo, from Escalos de Baixo. Due to the very low productivity this mine was abandoned still during the First World War, and the high price. But in 1940, during the Second World War, a storeroom for explosives and tin smelting plants are built illegally, despite cassiterite in the area was not sufficient to justify the plants. As in other cases in the region, the mine was used to justify buying wolfram and tin coming from other mines. The Mining Group of Arouca was notified in October 1941 to pay a fine of 4000\$ for having received in their washing plant ore without documents. According to PSP police the ore was bought without documents and sold to António Pinho Moreira. 470 kg of wolfram were apprehended partially under treatment. The documents used were fake. In September 1941, the General Mine Office confirms new apprehension of ore without documents and suggests that some employee would be selling transit documents to occult ore. The Sociedade Mineira dos Estanhos de Lardosa complains to authorities that Carlos Almeida, owner of many concessions for mines in the area, but suspended by court, was dedicated to buy ore without documents coming from other mines or free land with prejudice for the mining companies and the State. The Sociedade Mineira dos Estanhos de Lardosa is one of the affected companies because the workers were trying to steal ore to sell illegally. Carlos Almeida built two smelting plants in Ronções for reducing cassiterite, without authorization. Carlos Almeida was trading ore between Lardosa and S. Miguel d'Acha, easy to proof by inquiring local people. Carlos Almeida established a price for the illegal ore higher than the established by companies and the workers sold to whom was paying better.



Olá/Hola/Ciao/Bonjour/Γειά σου/Hallo/God Dag/Salut/Zdravo/Hello/Ahoj/Helo/Helló/ Hei

As measure against this fact, Manuel Castanheira, owner of the Sociedade Mineira de Estanhos da Lardosa, became established in the new mine of Fonte Serrana. People from Lousa were opening edges and by the middle of January 1942, they invaded the concession, exploiting wolfram, and only controlled by the intervention of GNR soldiers and PSP police.

Wolfram period is now distant, and Lousa lives nowadays from local agriculture, shepherd, small wood transformation industry and some small commerce. Its proximity to the national motorway between Castelo Branco and Penamacor, with connection to A23 highway, could stimulate the development of high-quality restaurants, fostering innovation in traditional gastronomy and gift shops based on regional products and handcrafting, which is worth to mention the honey produced in Lousa. The olive oil has also quality tradition, once Lousa was pioneer in the production of table-use olive oil, the second in Portugal in the middle of the nineteenth century, by Casa Vaz Preto. The tradition of dancing, emphasizing the Dance of the Virgins, could be used as brand for a vibrant culture, which the Ethnographic Museum (Olive oil room and Traditional Dances room) values but require more attention and a stronger cultural agenda, participating in the festivities of Castelo Branco and the Center Region. The Beiroa Guitar has in Lousa one of its last strongholds, associated to the Dance of Men. Also Genébre is a musical instrument unique from Lousa. Lastly, from traditional dances from Lousa it is worth to mention the Scissors Dance related with the long-lived shepherd culture. Lousa is thus an ancient land, with a dimension of tradition that should be better worked and valued in the frame of local development and regional identity.

Recommended bibliography:

Leal da Costa, I. 2011. As Danças Tradicionais da Lousa – um Património da Beira Baixa. Junta da Freguesia da Lousa.

Lousa-um cantinho na Beira Baixa: www.lousa.no.sapo.pt.

Alguns rabiscos sobre a Lousa: www.rabiscoslousenses.blogspot.pt.

The Editor
Carlos Neto de Carvalho
Scientific Coordinator
Geologist

Cover: Nuno Dias (Objectiva: Geopark Project, www.naturtejo.com/objectiva)

ACTIVITIES OF THE MONTH



January – National Geographic calendar 2013 facing Monsanto. National Geographic Portugal has dedicated the annual calendar to the historical villages of Portugal. Monsanto geosite opens the calendar which includes also the historical village of Idanha-a-Velha at Naturtejo Geopark. An internet contest to choose the best photo of the calendar from National Geographic gave the first prize to...Monsanto!!



A new geo-company operating in the Geopark. “Acti.GEO was just born at the base of Monsanto inselberg, in Adingeiro. Constituted in July this company run by Jorge Costa is operating guided visits in the Geopark main geosites and historical places. Sport activities, Horse riding, interpretative routes, trekking, organization of events, birdwatching and teambuilding are included in the offer provided by Acti.GEO, with long experience of the territory. Jorge Costa was born in Monsanto and no one knows the area better than him. A young entrepreneur that collaborates with Naturtejo as voluntary since some five years ago that is now finding a niche of increasing business.

Monte Filipe: new 4 star hotel in the southernmost corner of the Geopark. Monte Filipe Hotel & Spa is the new acquisition for the delightful area of Alpalhão, in Nisa. The new born opens the doors to Nature Tourism, 4 stars of comfort and quality of life with 48 rooms and 2 suites. Strategically located between Portas de Ródão Nature Monument and S. Mamede Nature Park, and in contact with S. Mamede and Lage de Prata Natura 2000 sites Monte Filipe Hotel is the closest way to enjoy the Geopark's geological heritage and biodiversity, and so near to Fadagosa thermal springs.

Nisa, Amieira do Tejo, Castelo de Vide or Marvão are historical towns that deserve a closer look. The hotel is located in Alpalhão, a village that is worth to visit with the typical architecture from the south of Portugal, elegant restaurants from the Flavors Route including "Chaparro" hotel's restaurant and the Sculptures Park, right in the village and unique in the region, made of the local famous "Azul" granite and superb for a cultural walk in the surroundings of Monte Filipe. For so many reasons Monte Filipe Hotel & Spa, as partner of Naturtejo Geopark, is the right choice when deciding for lengthy discover of its uniqueness.

January - Different Portugal includes the Geopark in Nature and Culture offer. The tour operator Different Portugal is working with Naturtejo. This month it was launched a new proposal for the international trade. The Nature and Culture Route includes a visit to the Naturtejo Geopark. More information in www.differentportugal.com.

8th January- Naturtejo presented in the Business Networking and Referrals. Business Networking International is the world's largest business networking organization. The aim of BNI is to achieve better results through a stronger cooperation between local companies that result mainly from weekly meetings (very early in the morning!) and development of common activities of team building or public outreach. At Naturtejo Geopark BNI has two local groups. Naturtejo is included in the group from Castelo Branco. Every week one company must introduce itself and show its products. This was the time for Naturtejo. Tiago Oliveira and Joana Rodrigues introduced businessmen to Naturtejo Geopark, the territory, opportunities and tourism offer.



17th January- New autochthonous trees planted behind Naturtejo Geopark headquarters. 22 pupils from the 8th grade and their two teachers from the School EB2,3/S José Silvestre Ribeiro of Idanha-a-Nova gave life to new trees just in the backyard of Naturtejo Geopark headquarters. With Manuela Catana and municipality staff they planted 515 seeds from autochthonous plants: 150 Holm-oaks, 65 Portuguese Oaks and 300 Cork-Oaks. This event is part of the Eco-schools national program, in which this school is participating together with the Municipality of Idanha-a-Nova and Naturtejo Geopark.



15th to 18th January – Portuguese Geoparks showcase at National Parliament. The Portuguese Geoparks Forum organized in the National Parliament the Week of the Geoparks. In the main lobby the European and Global Geoparks of Naturtejo and Arouca, as well as the Geopark projects of Azores and Terras de Cavaleiros provided to the parliamentarians, secretaries of the state, ministers and Parliament workers in general an exhibition introducing geoparks, a conference and cultural animation with booths representing each geopark involved. The aim of this initiative developed with the National Commission for UNESCO was to promote geoparks as sustainable approaches for regional development in rural areas. A full week agenda was prepared, with each geopark having its own day to show local culture and gastronomy. Naturtejo Geopark's day launched the event with the presence of José Ribeiro e Castro, President of the Commission for Education, Science and Culture, together with the Parliamentarian and geologist(!) Maria José Castelo Branco. Naturtejo Geopark presented the Mountain Products and Geo-Sweets from Oleiros, Products from Ródão and Idanha-a-Nova. In the Geopark booth there was live handcrafting, with the ceramist António Pequeto executing the famous Stoned Pottery from Nisa (with local Pliocene clay and Variscan white quartz) for the enthusiasm of all the numerous participants. Prof. Galopim de Carvalho, a Portuguese pioneer in geoconservation that fostered the defense and value of Geological Heritage in Portugal, was honored by the Portuguese Committee for IGCP.

The seminar "Geoparks: A reality for Local Development" welcomed Nickolas Zouros coordinator of the European Geoparks Network as guest speaker, and included representatives of each of the four Portuguese geoparks, the Science Sector delegate Elizabeth Silva from National Commission for UNESCO and the Portuguese Committee of IGCP. Geoparks were introduced to the short audience, basically composed by people from each geopark, where heritages and development projects were presented, as well as the aims and activities of the Portuguese Geoparks Forum/Portuguese Committee of the IGCP. Armindo Jacinto introduced Naturtejo Geopark exposing resources and strategies for value the first Portuguese geopark, and talking about some of the sustainable development projects on the way.

25th to 27th January – Survival Course joins Naturtejo team and local businessmen. The tourist village of Termas de Monfortinho welcomed hundreds of Portuguese and Spanish visitors that participated in the first Game and Gastronomy Festival. The aim of this two-day festival was to showcase the quality of the traditional gastronomy based on game. The municipality of Idanha-a-Nova includes 1200 ha of organized game areas and 86 hunting reserves, and hunting tourism is important in the area. Diverse show cooking and local pubs provided the taste of game animals. The festival included also hunting dogs show, a gastronomical contest and a show about the medieval art of falconry. A seminar on the impact of hunting on the economical sustainable development of natural resources was organized in the Hotel Fonte Santa, where Armindo Jacinto represented Naturtejo and speakers came from the University of Aveiro and University of Leon, in Spain. The association of workers of RTP national television organized a game experience for 85 people. During the weekend they visited with Tiago Oliveira and the new tourism company Actigeo the Ichnological Park of Penha Garcia. The Sunday live show "Somos Portugal" from TVI, the tv channel with more audience in Portugal, as broadcasted directly from the Game and Gastronomy Festival of Termas de Monfortinho.



25th to 27th January – Survival Course joins Naturtejo team and local businessmen. The OzExtreme Adventure organized in Penha Garcia a Survival Course for businessmen from Castelo Branco, staff from the Municipality of Idanha-a-Nova and Naturtejo team. Three days of orientation in the forest, camping in the cold and rainy nights, very few food and lots of fun. Team building resulted in constructing shelters with natural materials to spend the night, cooking, making fire and finding food. The group also learnt how to rescue in the wild. They started with a short visit to the Ichnological Park made by Carlos Neto de Carvalho and a technician from the tourism office. Three days later they were soaked wet but very happy eating local cakes in the Communitarian Oven and sharing the stories of the adventure. From Naturtejo Geopark team joined this adventure: Armindo Jacinto, Joana Rodrigues, Tiago Oliveira and Carlos Neto de Carvalho.

30th January to 3rd February– Geopark in FITUR Madrid. The municipalities of Oleiros and Proença-a-Nova presented their Geopark' geosites in the new stand of the local Leader association at FITUR, one of the most important tourism trade shows in the world. "Five Senses" was the main subject representing five municipalities of the Pinewood region. But the Naturtejo Geopark was also represented in the stand of Portugal through the Center of Portugal. Armindo Jacinto and Tiago Oliveira with Jesus Alarcon organized several business meetings with tour operators and established promising contacts already for the current year.



IMPACT OF GEOPARK IN MEDIA

Newspapers & www

1st January (Povo da Beira) – Termas de Monfortinho held workshop Judoneve 2012

3rd January (Reconquista) – Portugal O'Meeting 2013 organized in February – Orientation sportsmen from all over the world waited in Idanha

8th January (Reconquista) – Idanha-a-Nova held Portugal O'Meeting 2013

12th January (Diário de Aveiro) – Geoparks in the Parliament

16th January (Gazeta do Interior) – Game and Gastronomy Festival promotes the region

17th January (www.lusomotores.com) – BMW X Experience in May

20th January (Açoriano Oriental) – Portuguese Geoparks Forum

24th January (Reconquista) – Naturtejo Geopark in the Parliament

29th January (Povo da Beira) – Naturtejo Geopark in show at the Parliament

31st January (Reconquista) – World level Orientation exhausts hospitality in the borderland

31st January (Reconquista) – District in the most important tourism fair in the world

TV and RADIO

16th January (Onda Livre Radio) – Geopark Project promoted in the Parliament

20th January (TVI television – Somos Portugal show) – Interview to Manuela Catana in the Fossils Trail in the frame of the Game and Gastronomy Festival of Termas de Monfortinho

SCIENTIFIC CONTRIBUTIONS FOR THE GEPARK AND THE GEOSCIENCES



- Henriques, F, Chambino, M.L. & Caninas, J.C. – A estela do guerreiro (lusitano) de Zebros (Idanha-a-Nova). Sabucale, 25-44.



PROMOTION FOR THE GENERAL PUBLIC

Centro Cultural Salão

QUANDO A GENTE ANDAVA AO "MENÉRIO".




MEMÓRIAS MINEIRAS DO CONCELHO DE IDANHA-A-NOVA
O CASO DE PROENÇA-A-VELHA

Proença - Liga de Desenvolvimento de Proença-a-Velha
Salão Polivalente

9 de Fevereiro a 31 de Março

Logos of various partner organizations including the Municipality of Idanha-a-Nova, the Regional Development Agency (ARL), and the European Union.



ITB BERLIN

THE WORLD'S
LEADING TRAVEL
TRADE SHOW®

ITB Berlin - Hall 4.1.b
Celebrating

10
YEARS

Adventure Tourism
2004 - 2013

www.proencal.proencal.com

Proença-a-Velha

Liga de Desenvolvimento de Proença-a-Velha

Home page | proença-a-velha | proencal | modas e adufes | museu do azeite | galeria | links

Home page | proença-a-velha | proencal | modas e adufes | museu do azeite | galeria | links

BEM-VINDO(A)

A PROENÇA-A-VELHA

Última actualização: 14-02-2013 Copyright © Proença 2002-2010

Visite o nosso Blogue - <http://prohensa.blogspot.com>
Visite o "Modas e Adufes" no mysapce
Acompanhe o "Modas e Adufes" no Facebook
Próximas Atividades - 2013

9 Fev a 31 Março - Exposição no Salão Polivalente
«Quando a gente andava ao 'menério'»



PROMOTION FOR THE GENERAL PUBLIC

ANNOUNCEMENT

15th ANNUAL CONFERENCE OF THE INTERNATIONAL ASSOCIATION FOR MATHEMATICAL GEOSCIENCES

Frontiers of Mathematical Geosciences:
New approaches to understand the natural World

Madrid (Spain) 2-6 September 2013

Well for groundwater research. 1000 metres deep. Alcalá de Henares, Madrid (Spain). 1927-1928. Data of stained glass in the Instituto Geológico y Minero

Background

Since the International Association for Mathematical Geosciences (IAMG) was founded in 1988 in Prague, its mission has been to promote international co-operation and the use of mathematics in geosciences research and in technology. The IAMG Annual Conference provides an excellent environment to show the last advances in geomathematics and a great opportunity to make contacts and gather new ideas. Furthermore, the IAMG Madrid 2013 Conference is an event of the Mathematics of Planet Earth 2013 (www.mpe2013.org); another reason to be in Madrid from the 2nd to the 6th of September 2013.

Sessions

Advances in classical statistics relevant to the Geosciences - Frontier Geostatistics - Compositional Data Analysis Applied to Geochemistry - Data assimilation in Geosciences Machine learning in Geoscience applications - Spatiotemporal analysis: structural complexity and extreme behaviour - Parameterization of soil systems at different scales - Fractals, Chaos and Complexity in the Earth System - Remote Sensing a Changing World - Modern sensor data (and their processing) in Engineering Geology - Geographic Information Systems/Geoinformatics - Quantitative methods in Geomorphology and Land Surface Processes - Deformation modeling, Geodynamics and natural hazards - Hydrogeology: From process understanding to improved predictions - Quantitative hydrology: working across scientific disciplines and time-space scales - Quantitative Environmental Geology - Modeling of energy resources - New Developments in Oil and Gas Discovery Modeling - Open Session on Mathematics of oil Recovery - Geostatistical priors in inversion of geophysical and engineering data - Mineral and energy resources for planet Earth: evaluation, extraction and optimal management - Mathematical Petrophysics: Theory and Applications - Recent advances in Quantitative Methods applied to Stratigraphy and Paleontology - Mathematical Geosciences and Planetary Geology - Mathematics of Planet Earth

Important Dates

January 1, 2013:	Abstract submission starts/Reduced registration fee starts
February 1, 2013:	Abstract submission ends
March 1, 2013:	Notification of abstract acceptance/Extended abstract submission starts
April 1, 2013:	Extended abstract submission ends
May 1, 2013:	Revised extended abstracts returned to authors
May 15, 2013:	Early registration ends
May 20, 2013:	Submission of final versions of extended abstracts ends
September 2-6, 2013:	IAMG Madrid 2013

For more information visit

<http://www.igme.es/internet/iamg2013/>

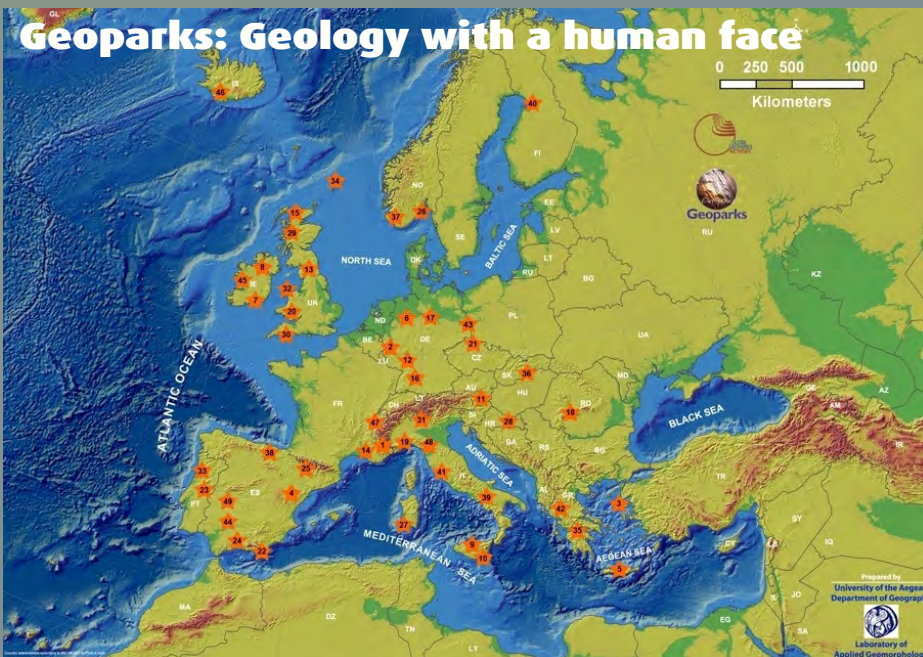
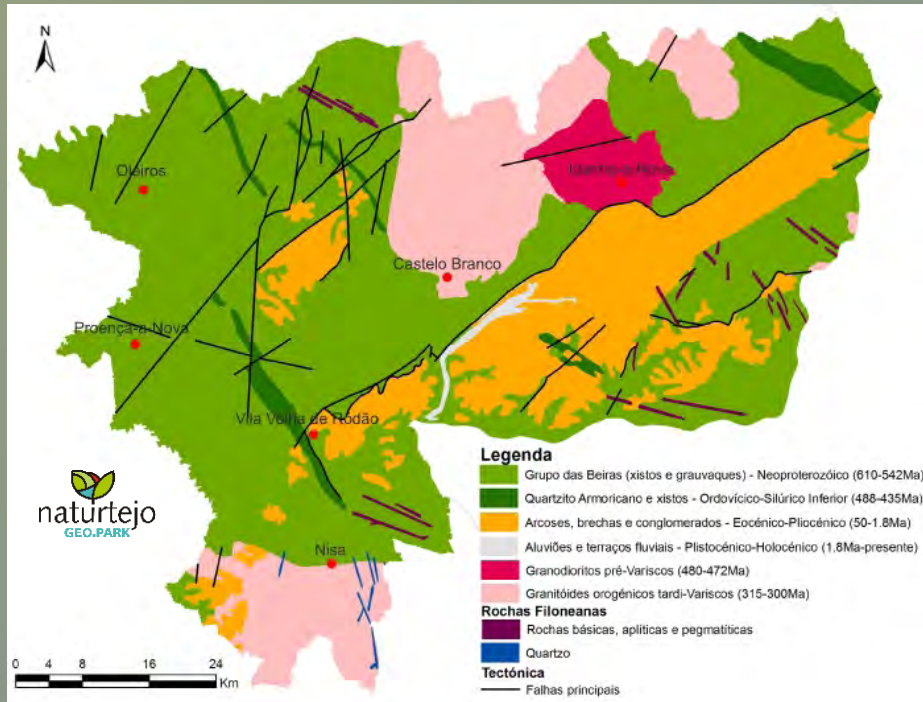
I ENCONTRO
INTERNACIONAL
DA CASA
DAS CIÊNCIAS

casa das ciencias.org

A UTILIZAÇÃO DE RECURSOS DIGITAIS EM CONTEXTO DE APRENDIZAGEM

21 + 22
MARÇO
2013

LISBOA
ESCOLA
SECUNDÁRIA
D. DINIS



CRUZIANA

GEOPARK NATURTEJO DA MESETA MERIDIONAL-EUROPEAN AND GLOBAL GEOPARK MONTHLY REPORT

www.geoparknaturtejo.com